

GPSMAP® 720s



ADD EXTRA Functionality with
Optional g2 Vision cartography



The multifunction 7" touchscreen chartplotter comes standard with a 1 kW capable sonar transceiver and worldwide basemap, NMEA 2000 compliant.



KEY FEATURES

- 7" WVGA touchscreen chartplotter
- Worldwide basemap built in
- High sensitivity GPS receiver
- High speed processor for exceptional redraw, zoom and refresh rates
- Compatible with Garmin radar* and sonar instruments
- Supports radar overlay
- NMEA 0183 and 2000 compliant
- Rugged and waterproof (IPX7)
- Integrated 1kW capable sonar
- BlueChart g2 & g2 vision compatible
- Optional accessories, please refer to Garmin website.



*(does not support MARPA)

GPSMAP® 585

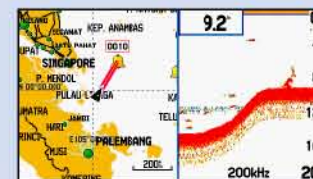


A full-function chartplotter features a high-speed digital design and ultra-bright 5" WQVGA color display. The GPSMAP 585 builds in a high-sensitivity GPS helping users lock onto satellite signals quickly.

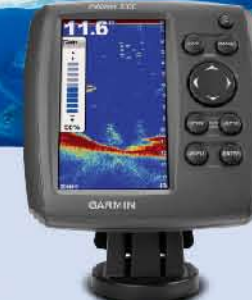


KEY FEATURES

- 5" bright WQVGA colour screen
- Worldwide basemap built in
- High sensitive GPS receiver
- Supports AIS and DSC
- NMEA 0183 compliant
- Rugged and waterproof (IPX7)
- Built-in 500W sounder
- BlueChart g2 compatible
- Optional accessories, please refer to Garmin website.



Fishfinder 350c

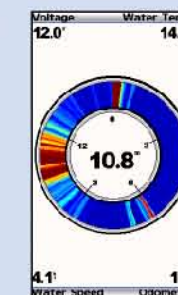
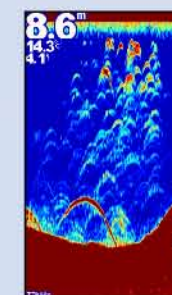


Garmin Fishfinder 350C is an all-rounder and with reasonable price tag fish finder. Fishfinder 350C scans water with 300 watts (RMS) power and extra-sensitive Garmin HD-ID™ target tracking technology. A dual-beam transducer optimizes performance for deep or shallow water, offering wide-angle (up to 120°) coverage to target fish beyond the sides of your boat and the ability to scan bottom profiles down to 1,500 feet.



KEY FEATURES

- 5" WQVGA display
- Clearly separates fish from thermoclines
- Dual frequency (200/77kHz)
- Dual Beam transducer— scans up to 120 degrees
- Range up to 450 metres
- Quick disconnect swivel/ tilt mount
- Transmit power 300W (RMS)
- Rugged and waterproof (IPX7)
- Optional accessories, please refer to Garmin website.



GPS 152H



A 4" high-contrast grayscale chartplotter comes preloaded with a marine database which includes cities as well as nautical navigation aids: lights, buoys, sound signals, day beacons and tide data.



KEY FEATURES

- High sensitive GPS Receiver
- Internal or remote antenna options
- 3000 waypoints / 50 Routes / 10,000 track log points
- Tide table data base built in
- Audible alarms
- DSC supported
- Water proof (IPX7)
- NMEA 0183 compliant
- Optional accessories, please refer to Garmin website.

